

## RADONA SYRUP

Monograph No. – 070245 ver 3.0

Issue No: 03

Amendment No : 01

Date of Issue: 28/10/2016

Amendment Date : 01/06/2021

Text Reference : Ayurvedic Proprietary Medicine

Shelf Life: 3 years

### Description

Brown coloured syrupy liquid, taste sweet followed by a slight bitterness, odour characteristic



### Brix

45 – 55 %

### Specific gravity

1.2 – 1.3 g/ml

### Refractive Index

1.40 - 1.45

### pH

4.0 - 5.0

### Thin Layer Chromatography Mobile Phase

Toluene : Ethyl acetate  
( 8.5 : 1.5 )

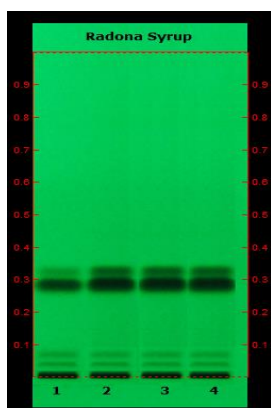
### Details

Solvent of Extraction – Ethyl acetate

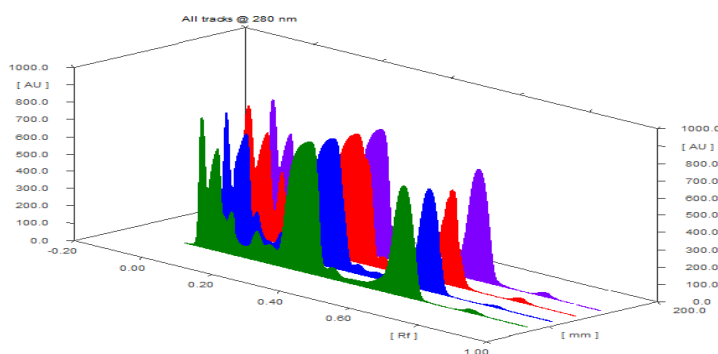
Solvent front – 90 mm

Total No. of Major spots – 4

Detection – Under UV at 254 nm



Major Spots	Colour	Approx. Rf.
1	Light Gray	0.04
2	Light Gray	0.07
3	Black	0.29
4	Gray	0.33



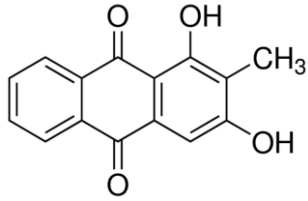
3D Peak Display of Radona Syrup at 280 nm

**Confidential – photocopy prohibited**

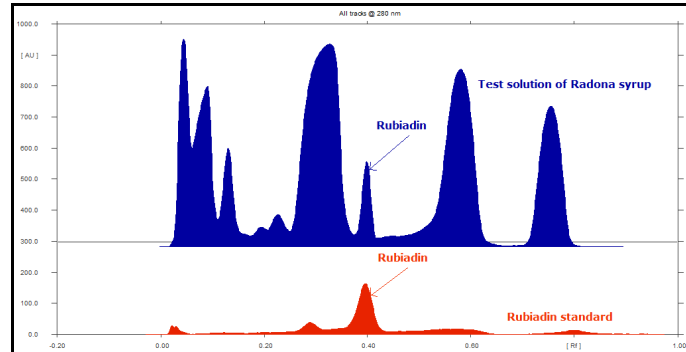
Note : † : These extra tests can be performed on every batch at extra cost. Tests can be ascertained on request.

## HPTLC Profile<sup>†</sup>

### i) Rubiadin



When examined in the range of 200 nm to 400 nm, the test solution shows absorption maxima at about 280 nm corresponding with Rubiadin standard.



<b>E. coli</b>	Absent/ml
<b>P. aeruginosa</b>	Absent/ ml
<b>Salmonella sp.</b>	Absent/ ml
<b>Staphylococcus sp.</b>	Absent/ ml
<b>Total Microbial plate count (TPC)</b>	NMT 10 <sup>5</sup> c.f.u./ ml
<b>Total Yeast &amp; Mould count (TYMC)</b>	NMT 10 <sup>3</sup> c.f.u./ ml
<b>Pesticide Residue<sup>†</sup> (OC+OP)</b>	Complies as per API
<b>Aflatoxins B1,B2,G1,G2<sup>†</sup></b>	Complies as per API