

MYOSTAAL SB TABLET

Monograph No. – 070357 ver 3.0

Issue No: 03

Date of Issue: 01/02/2019

Text Reference : Ayurvedic Proprietary Medicine

Amendment No : 00

Amendment Date : --

Shelf Life: 5 years

Description

White colored Caplet shaped film coated tablet.

Loss on Drying at 105°

Not more than 7 % w/w

Hardness

Not less than 2.5 kg/cm²

Thickness

4.5 ± 0.5 mm

Length

17.5mm +/- 0.5 mm

Disintegration Time

Not more than 60 min.

Average Weight

750 mg +/- 5 %

Uniformity of weight on 20 tablets

Not more than 2 tablets deviate by more than 5 % of the average weight and none by more than 10 % of the average weight

Ash

Not more than 60 % w/w

Acid insoluble ash

Not more than 10 % w/w

Water soluble extractive

Not less than 20 % w/w

Alcohol soluble extractive

Not less than 2 % w/w

Elemental Assay

Calcium (Ca)

NLT 130 mg/tab

Thin Layer Chromatography

Mobile Phase

Toluene : Methanol
(9 : 1)

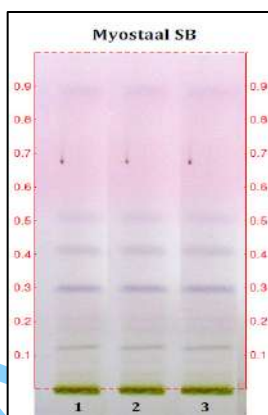
Details

Solvent of Extraction – Methanol

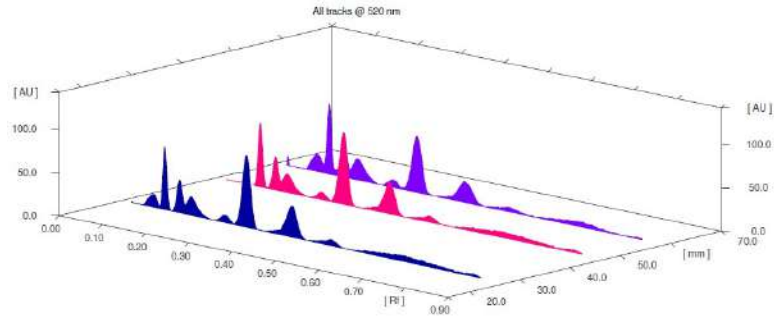
Solvent front – 90 mm

Total No. of Major spots – 4

Detection – After spraying Anisaldehyde H₂SO₄



Major Spots	Colour	Approx. Rf.
1	Violet	0.13
2	Violet	0.30
3	Violet	0.41
4	Light Violet	0.51

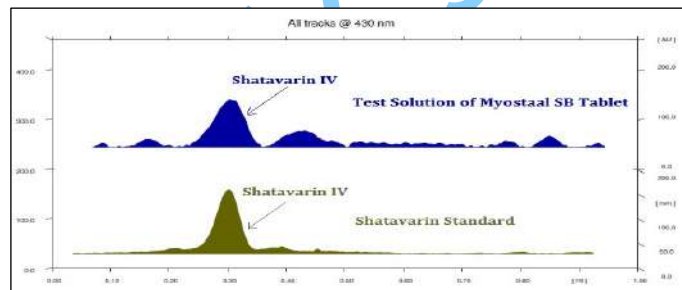
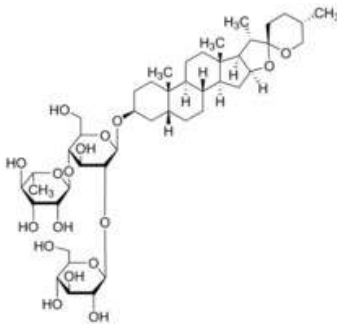


3D Peak Display of Myostaal SB Tablet at 520 nm

HPTLC Profile

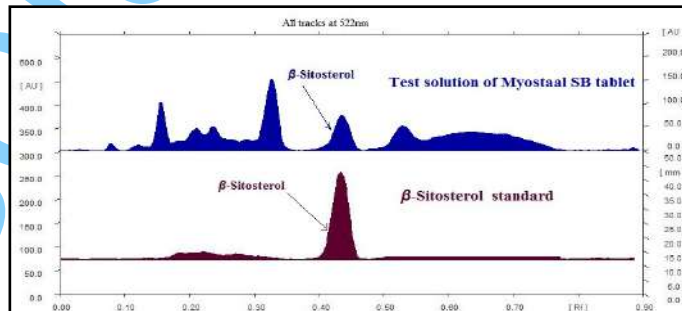
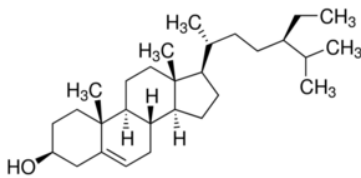
i) Shatavarin IV

When examined in the range of 400 nm to 700 nm, the test solution shows absorption maxima at about 430 nm corresponding with Shatavarin IV standard.



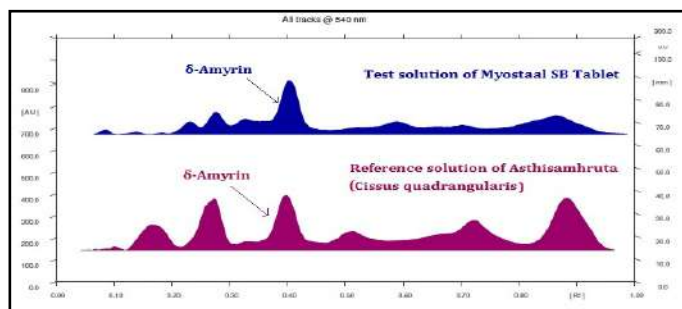
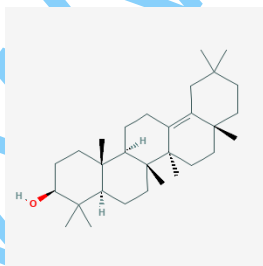
ii) β -Sitosterol

When examined in the range of 400 nm to 700 nm, the test solution shows absorption maxima at about 522 nm corresponding with β -Sitosterol standard.



iii) δ -amyrin

When examined in the range of 400 nm to 700 nm, the test solution shows absorption maxima at about 540 nm corresponding with δ -amyrin.





Shree Dhootapapeshwar Standards

E. coli [†]	Absent/g
P. aeruginosa [†]	Absent/g
Salmonella sp. [†]	Absent/g
Staphylococcus sp. [†]	Absent/g
Total Microbial plate count (TPC) [†]	NMT 10 ⁵ c.f.u./g
Total Yeast & Mould count [†]	NMT 10 ³ c.f.u./g
Pesticide Residue [†] (OC+OP)	Complies as per API
Aflatoxins B1,B2,G1,G2 [†]	Complies as per API

WWW.SOLUMIKS.COM