

ESPITONE SYRUP

Monograph No. – 070216 ver 3.0

Issue No: 03

Date of Issue: 28/10/2016

Text Reference : Ayurvedic Proprietary Medicine

Amendment No : 02

Amendment Date : 03/09/2024

Shelf Life: 3 years

Description

Amber coloured, viscous syrupy flavoured liquid; taste sweet; odour characteristic.

Brix

45 – 55 %

Specific gravity

1.20 - 1.30 g/ml

Refractive Index

1.400 - 1.425

pH

4.5 - 5.5

Thin Layer Chromatography

Mobile Phase

Chloroform : Hexane : Methanol
(6.4 : 3.4 : 0.2)

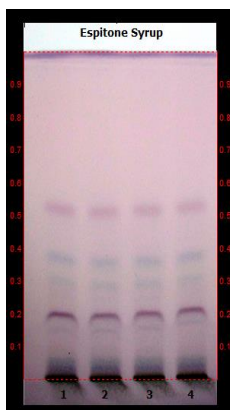
Details

Solvent of Extraction – Ethyl acetate

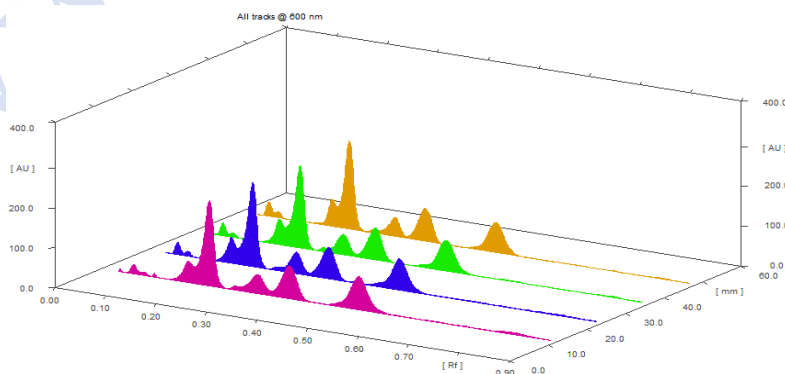
Solvent front – 90 mm

Total No. of Major spots – 5

Detection – After spraying with Anisaldehyde H₂SO₄



Major Spots	Colour	Approx. Rf.
1	Violet	0.15
2	Purple	0.20
3	Greenish Blue	0.29
4	Light Blue	0.36
5	Pink	0.51



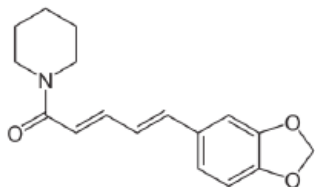
3D Peak Display of Espitone syrup at 600 nm

Confidential – photocopy prohibited

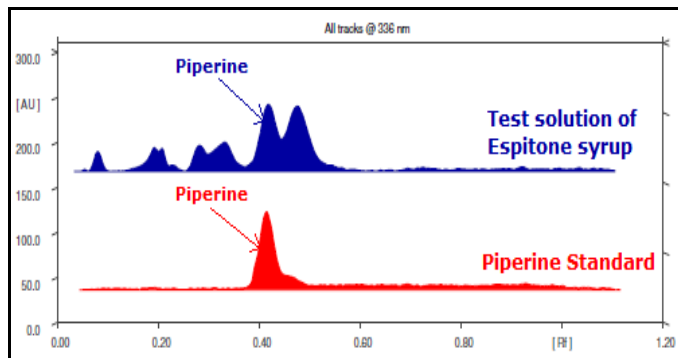
Note : † : These extra tests can be performed on every batch at extra cost. Tests can be ascertained on request.

HPTLC Profile[†]

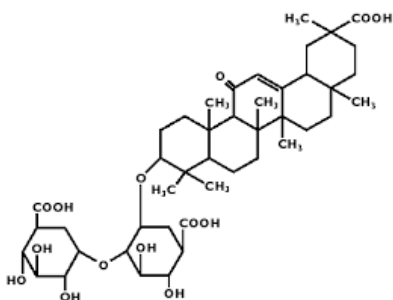
i) Piperine



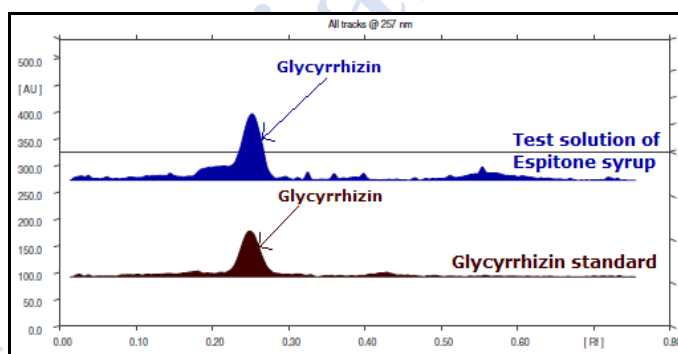
When examined in the range of 200 nm to 400 nm, the test solution shows absorption maxima at about 336 nm corresponding with Piperine standard.



ii) Glycyrrhizin



When examined in the range of 200 nm to 400 nm, the test solution shows absorption maxima at about 257 nm for Glycyrrhizin corresponding with Glycyrrhizin standard.



Heavy metal

Lead (Pb)	NMT 10 ppm
Mercury (Hg)	NMT 1 ppm
Arsenic (As)	NMT 3 ppm
Cadmium (Cd)	NMT 0.3 ppm
<i>E. coli</i>	Absent/ml
<i>P. aeruginosa</i>	Absent/ml
<i>Salmonella sp.</i>	Absent/ml
<i>Staphylococcus sp.</i>	Absent/ml
Total Microbial plate count (TPC)	NMT 10 ⁵ c.f.u./ml
Total Yeast & Mould count (TYMC)	NMT 10 ³ c.f.u./ml
Pesticide Residue[†] (OC+OP)	Complies as per API
Aflatoxins B1,B2,G1,G2[†]	Complies as per API