

DILAPSIN SYRUP

Monograph No. – 070209 ver 3.0

Issue No: 03

Date of Issue: 28/10/2016

Text Reference : Ayurvedic Proprietary Medicine

Amendment No : 01

Amendment Date : 01/12/2021

Shelf Life: 3 years

Description

Light amber coloured, syrupy liquid; taste sweet; odour, pleasant and characteristic smell of Jeera.

Brix

45 – 55 %

Specific gravity

1.2 - 1.3 g/ml

Refractive Index

1.400 - 1.450

pH

3.50 - 4.50

Thin Layer Chromatography

Mobile Phase

Toluene : Ethyl acetate : Formic acid
(4 : 4 : 2)

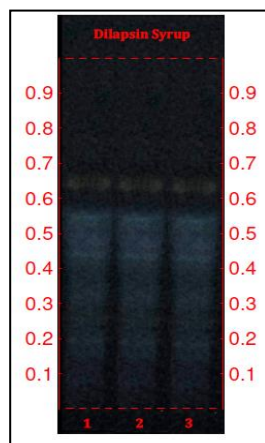
Details

Solvent of Extraction – Ethyl acetate

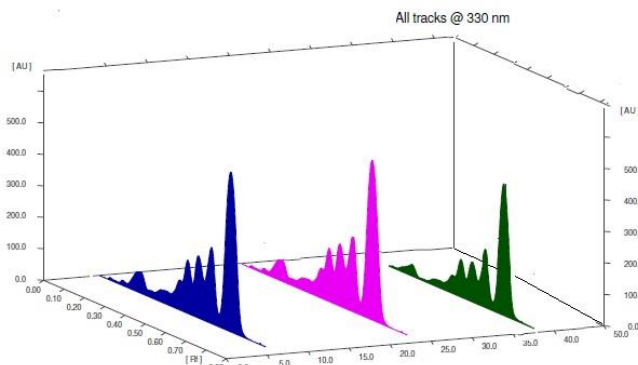
Solvent front – 90 mm

Total No. of Major spots – 4

Detection – Under UV at 366 nm



Major Spots	Colour	Approx. Rf.
1	Light Blue	0.43
2	Light Blue	0.48
3	Light Blue	0.54
4	Light Yellow	0.64



3D Peak Display of Dilapsin Syrup at 330 nm

Confidential – photocopy prohibited

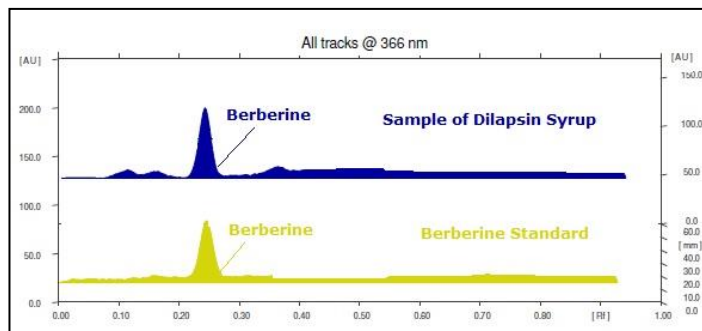
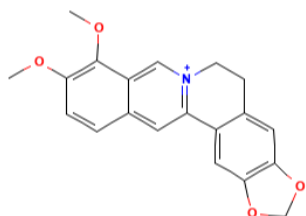
Note : [†] : These extra tests can be performed on every batch at extra cost. Tests can be ascertained on request.

HPTLC Profile[†]

i) Berberine

Not less than 0.0004 % v/v

When examined in the range of 200 nm to 400 nm, the test solution shows absorption maxima at about 348 nm for Berberine with Berberine standard.



Heavy metal

Lead (Pb)

NMT 10 ppm

Mercury (Hg)

NMT 1 ppm

Arsenic (As)

NMT 3 ppm

Cadmium (Cd)

NMT 0.3 ppm

E. coli

Absent/ml

P. aeruginosa

Absent/ ml

Salmonella sp.

Absent/ ml

Staphylococcus sp.

Absent/ ml

Total Microbial plate count (TPC)

NMT 10⁵ c.f.u./ ml

Total Yeast & Mould count (TYMC)

NMT 10³ c.f.u./ ml

Pesticide Residue[†] (OC+OP)

Complies as per API

Aflatoxins B1,B2,G1,G2[†]

Complies as per API